



Otley in Bloom

Who are we?

Otley in Bloom is a group of local volunteers who help to keep Otley blossoming, cared for, beautiful and friendly to birds, bees and butterflies as well as people.

What do we do?

In short, we love our town and do our best to keep it looking good! We clean, prune, water, weed and litter pick. We grow plants on our allotment and create striking displays in planters all around the town, even up its lampposts. We work with local traders to maintain pots, flower beds and window boxes which brighten the streets. We bring plants to the bus station and gateways into town. We've created a nectar bed in Wharfemeadows Park and helped to rescue neglected patches of land, such as Myers Croft Beck and the 'old gas works corner' on Cambridge Street. Over the past three years we've fitted over twenty nesting boxes to sites in Otley's green spaces. We work alongside the local council and organisations such as the Rotary Club, planting spring bulbs along the by-pass. We helped create a wildflower meadow at the Whartons School and last year we began a project with local businesses involved in the Business Improvement District to bring more floral displays to the centre of town, especially Bondgate, Westgate and Bridge Street. Then there's the Yorkshire in Bloom competition, which involves judging days in spring and summer.

The Tour de France

Our biggest project in 2014 was based on the Tour de France. We sourced 24 bicycles, painted them yellow and positioned them around town, adorned with baskets of yellow flowers. The project won a special award from Yorkshire in Bloom for entering into the spirit of the Tour de France. In the autumn we raised funds by selling off our yellow bicycles, which travelled as far afield as France and Holland. We decided to redecorate and keep one bike outside the library as a quirky notice-board for Otley in Bloom.

Awards Galore

It started in spring with our 'pocket' garden at Harrogate Show called 'Wheelie Good for Bees'. We were delighted to win Bronze and a £50 prize. In September Otley was awarded both Gold and Category Winner at the prestigious Yorkshire in Bloom awards. To end the year we won a grant from Skipton Building Society's Grassroots Giving scheme, which will be used towards sustainable planting projects for the town.

Fundraising and awareness raising

We tell people about Otley in Bloom and raise money for plants and equipment. Last December a decorated Christmas tree in the parish church showed our year's work. In March we had a Saturday stall at the Buttercross, sold plants and cakes and ran children's competitions. In April we held an event for National Gardening Week, with a demonstration of container planting and refreshments. In May there was summer planting in the town centre. On July 3rd there will be a guided walk around Otley led by David Bellerby, featuring Otley in Bloom's 'highlights'.

Projects for 2015

This year our town centre displays include sustainable planting, which benefits wildlife and holds its attractiveness. Spring bulbs feature in our planning. On Sunday September 20th we'll plant snowdrop bulbs in memory of British soldiers killed overseas during the First World War, buried with flowers from home on their graves.

Get Involved

Our meetings are on the first Tuesday of every month at 7.00pm at Courtyard Planters. There are lots of ways to join in, from sociable tidying up to practical gardening sessions. Call Katie on 01943 462390 for more details. Keep up to date at www.otleyinbloom.co.uk or visit our Facebook page.



Voice Your Choice

Call for Project Ideas



Otley Town Council once again invite residents to spend a portion of its budget through the Voice Your Choice initiative. This year **Voice Your Choice** has a fund of £10,000.

The Council are now calling for any ideas and suggestions on projects/events that residents would like to see delivered in the town. The only restriction is that your project idea must be practical in terms of being able to be delivered within the budget constraints.

The public ballot, where Otley residents vote for the winning projects will take place in early September.

If you have an idea or project proposal then we would like to hear from you. Anyone who would like to put forward their ideas should complete the simple online form at: www.otleytowncouncil.gov.uk or pick up a form at our offices in the Otley Core. Alternatively you can forward your ideas to Jason Knowles via e-mail: community@otleytowncouncil.gov.uk

The deadline for project ideas is 3pm on Monday 22nd June.

Merchandise @ Otley Core

As the first anniversary of the Tour de France coming to Otley approaches, please relive this fantastic event by picking up your copy of the commemorative book *'The Day Le Tour Came to Otley'* featuring over 140 stunning pictures, priced £10. A short film entitled *'The Day Le Tour Came to Otley'* is also available on DVD priced £5. These will make ideal Father's Day or birthday gifts.



UPCOMING EVENTS

June

- 7 Sport Chevin Family Activity Day
- 20 Otley Carnival
- 21 Summer Bands in the Park – Yorkshire Bavarian Oompah Band
- 27 Otley Walking Festival (runs through to 5th July)
- 28 Otley Farmers Market
- 28 Courthouse Designer Craft Fair
- 28 Chippendale Indoor Market

July

- 1 Otley Cycle Race
- 12 Otley Food & Drink Festival
- 19 Summer Bands in the Park – Otley Brass Band
- 26 Otley Farmers Market
- 26 Courthouse Designer Craft Fair
- 26 Chippendale Indoor Market

August

- 1-9 Otley Yorkshire Week
- 30 Otley Farmers Market
- 30 Courthouse Designer Craft Fair
- 30 Chippendale Indoor Market

* Otley Market Days held every Tuesday, Friday and Saturday

Otley Carnival 2015

Plans are well underway for this year's Otley Carnival on Saturday June 20th. The day's entertainment will begin with the Parade through town. There will be floats and walking groups from local schools and organisations. Music will be performed by an eclectic mix - Leeds Pipe Band, Otley Town's Brass Band, Foxwood Steel Bandits, Drums Agogo, Slick Stick Sambastics and Otley's Ukulele Players.



Entertainment on the Carnival field will be provided by the Revolution Show Corps, Yorkshire Hawking Club, Otley Rhythm Gymnastics Club and the Yeadon Air Cadets Band. There will be a variety of fairground rides and stalls to enjoy!

There is no admission fee to the Carnival field, so please give generously to the collectors during the parade. Help us raise funds for this year's beneficiaries Martin House Hospice, Singing for the Brain at Otley's Courthouse and Pool in Wharfedale Youth Club.

For further information or to offer to be a collector during the parade, contact Ann Steval on 01943 466995.



MUSIC IN WHARFEMEADOWS PARK

This summer, Wharfemeadows Park, Otley will host two concerts as part of Leeds International Concert Season's Summer Bands in Leeds Parks series. Firstly, the Yorkshire Bavarian Oompah Band will perform popular favourites on Sunday 21st June and local talent Otley Brass Band will perform brass band classics on Sunday 19th July. Both concerts are on Sundays from 2.30pm to 4.30pm and are absolutely free.

Dig out your picnic rugs and sunhats for a perfect way to spend a lazy Sunday afternoon. For a free leaflet with full listings of Summer Bands in Leeds Parks call 0113 247 8336, email music@leeds.gov.uk or visit www.leedsconcertseason.com

These two concerts are very kindly sponsored by Outer North West Area Committee and Otley Town Council.



Photograph by Simon Cliff

Otley Walking Festival 2015

It's back again! Get your boots ready for Otley Walking Festival 2015.

This year's Walking Festival opens on Saturday 27th June and runs right through until Sunday 5th July with walks and events every day and evening of the Festival.

With a choice of 52 walks and events, there really is something for everyone! Short town-based walks, themed walks, woodland walks, strenuous moorland hikes plus a full evening programme of entertaining themed events. A great opportunity to enjoy all that Otley and the wonderful Wharfedale environment has to offer. You can be sure of a warm welcome from our Walk Leaders and the chance to meet other friendly folk.

Otley Walking Festival 2015 programmes are available now at Otley Core, Otley Library, Otley Courthouse, Tourist Information Centres, local businesses, and the Festival Office based at Chevin Trek.

Also online at www.otleywalkingfestival.co.uk and www.chevintrek.co.uk



Otley Yorkshire Week • August 1st - 9th

An exciting week of events and activities will form the basis of celebrations for this year's Yorkshire Week. Commencing on 1st August, local groups and businesses will be offering a range of events that will give residents and visitors a chance to see

the wealth of activities on offer in Otley.

A full programme of events will be published nearer the time however, a taster of some of the things you can experience include:

- Saturday 1st August - Tyke Talk is an entertaining regionally flavoured talk about the origins of the Yorkshire dialect;
- Thursday 6th August - Otley Film Society present the classic Yorkshire film 'Brassed Off';
- Thursday 6th August - Otley Library presents Farmyard Fun for the Under 5's and Woollen Wonders for ages 5-11;
- Friday 7th August - Otley Action for Older People's 'Summer Fun Day for the Over 60's';
- Otley Walkers provide a programme of guided walks to suit all throughout the week;
- Local pubs and restaurants celebrate the rich range of Yorkshire food and drink;
- And loads more.

If any local groups would like to run an event or activity, please contact us by Friday 12th June and we will include it in our programme. Please contact Jason Knowles on 01943 466335 or e-mail community@otleytowncouncil.gov.uk



Otley Food & Drink Festival Sunday July 12th

Otley Food and Drink Festival will have a wonderful array of over 50 stalls selling good quality, locally sourced products and a full programme of events including a cookery theatre with demonstrations by local chefs from within Otley and Otley Farmers' Market.

Throughout the day there will also be food and wine tastings, local breweries, live music and entertainment and much, much more.

A tasty day for all the family. Come along and join in the fun!!



VISITOTLEY | www.visitotley.co.uk
For everything that is happening in Otley



OTLEY SAILING CLUB



Heather Thomas, an 18 year old sailor from Otley Sailing Club has been awarded a chance of a lifetime to sail from China to the United States on leg 6 of the Clipper Round the World Race.

Heather was one of only two youngsters to win the prize and was shortlisted by no other than Sir Ben Ainslie and Sir Robin Knox-Johnston – two of Britain's best known sailing legends!

The competition for the prize was organised by the Andrew Simpson Sailing Foundation – a charitable organisation which was set up in memory of the gold and silver medal winning Olympic sailor Andrew "Bart" Simpson who was tragically killed whilst training for the Americas Cup. The foundation strives to transform the lives of young people through the sport of sailing.

Heather will now embark on a programme of training to prepare her for the life changing experience battling the elements in the Pacific Ocean. The leg of the race in which Heather will compete will start in March 2016 and will take around 35 days.

All at Otley Sailing Club wish her well!

OTLEY FOLK FESTIVAL 2015

This year the 18th - 20th September heralds the 24th Otley Black Sheep Folk Festival.

This year's artists include:

Singer/songwriter **ALLAN TAYLOR** celebrating his fiftieth year as a folk performer; Radio Two folk award winners and top duo **O'HOOLEY & TIDOW**; this country's best and most famous acapella trio **COOPE, BOYES & SIMPSON**; the hilarious **NEW ROPE STRING BAND**; and everyone's favourite, humorous and talented **FLOSSIE MALAVIALLE**. We also welcome a one off reformation of local heroes **BAYOU GUMBO** plus a Saturday evening ceilidh with **THE LONELY MR PUNCH**.

As well as our own local grown talent, all of whom are capable of performing at the highest level, we also include: **ROISIN BAN, MIC & SUSIE DARLING, ROBIN GARSIDE, GLORIA, ZEKE DEIGHTON, THE PHIL LANGRAN BAND, THE FRINGE SISTERS, COPPER KETTLE, JIM POTTER** and **THE REVERB PROJECT**.

As usual we are asking anyone who would like to help the folk festival by way of stewarding or managing venues to get in touch with us at otleyff@hotmail.com

For more information see our website www.otleyfolkfestival.com



Battle of the Bands produces a first!

The Prince Henry's Battle of Bands for the Martin House Centre Stage competition produced another first this year, with the judges so impressed by the quality of the acts, they put all seven bands through. For the first time in the history of the competition there will be a heat featuring bands from just one school.

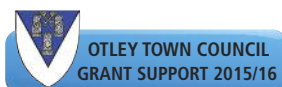
The heat took place on Tuesday 28th April at the Belgrave Music Hall. The qualifying bands were: **Acquiesce; Blyss; Encranium; Lewis Crossley & Harri Pitches; Osea; Porl Whos and The Velveteens**.

The competition also raises funds for Martin House and the Prince Henry's Battle of the Bands event at Otley Courthouse, where the judges from Martin House selected the seven bands, raised nearly £1,000 for the charity. Otley Town Council, through their community grant awards, generously provided a grant of

£240 towards the cost of the event and the school is thankful for their support in providing these opportunities to local bands.

If successful in the heats, the bands will get to play in the Final at the O2 Academy in front of more than 1,000 people - with the prize of a place to play at both the Reading and Leeds Festivals and a music video up for grabs for the winners.

"This is a real testament to the talent the students bring to the competition. They are all really different and the heat will be a great night out. The competition is something we really value at school – it gives our students the opportunity of a lifetime while helping us raise money for such a valuable cause," said Chris Smith, Area Leader for English and organiser of the Battle of the Bands.



OTLEY SKATE PARK

Otley Skate Park community have united to form the Otley Skate Park User Group. Denham Hill a freestyle skateboarder, a frequent user of the park, has been the driving force behind the project. Their aims are very clear, to promote safety, inclusion and raise funds to improve the facility. Denham Hill was unanimously voted into the post of Chair by the committee, he said "I am looking forward to my first year in post, we have plans for another Skate Jam this summer coupled with a coaching initiative so we can nurture and develop the skills of young skateboarders new to the sport". Sarah Agar-Brennan from *Sk8 Safe Ltd* has helped the young people form the group. Sarah said "It's an exciting time for the skate park users of Otley and I am really looking forward to helping them achieve their goals."



FIVE YEARS ON

Since leaving the Civic Centre in 2010 we have continued to explore all possibilities to accommodate the stored collection and have gone from strength to strength from our temporary base in helping individual and professional researchers, publishing a book, giving powerpoint presentations and putting on temporary exhibitions.

In 2014 we embarked on a larger project: our commemoration of the First World War Centenary with an exhibition in the Core Resource Centre. Copies of the booklet can be purchased at the museum or local bookshops. This project was recommended by the Heritage Lottery Fund for entry to the 2015 National Lottery Awards – we await the result.

A recent paper published by Arts Council England shows that independent museums make a significant contribution to their local communities and the national economy. It highlights the vital and widely acknowledged role of heritage in the UK's tourism economy.

To contact us:

Telephone: 01943 468181 www.otleymuseum.org Email otleymuseum@btconnect.com

OTLEY & YORKSHIRE DALES DRY STONE WALLING ASSOCIATION

Imagine yourself walking along the Dalesway between Kettlewell and Buckden, the sun on your back, a curlew piping its haunting call. Or you're on the Chevin, in the clearing below the White House, in the Spring morning sunshine serenaded by a cacophony of birdsong.

You are excited by the prospect that, today, you're going to complete a walling project that a small group of you have been working on for several months over weekly visits.

Your part in building these walls may have been small, but a day's walling leaves you physically tired, yet fitter for having shifted about 5 tons of stone. You're mentally stimulated from the banter amongst the group and the visible achievement of the day. Long afterwards, there remains the pride in having left behind something which will last hundreds of years and having become part of a fellowship which stretches back through mankind's entire evolution.

We need to attract new members to keep the skill alive and try to maintain the place of the dry stone wall in our landscape. We meet on the first Tuesday of each month at Otley Social Club on Weston Drive and at various locations within the region weekly for practical sessions.

If you need any information or would like to join, please contact: secretary@otleyyorksdaldeswa.org

Your countryside needs you!



Otley Chamber Orchestra

Founded in January 2009 and rehearsing fortnightly on Sundays at the Otley Courthouse. Otley Chamber Orchestra started with a small group of around 35 musicians and now has over 50 regular attenders drawn from across Wharfedale, Airedale and further afield. They primarily meet up for the pleasure of playing and rehearsing the orchestral classics but have also given annual public concerts at the Otley Methodist Hall which have proved to be a great success.



After the retirement of the founding Conductor, Tricia Restorick, the orchestra have appointed a young Slovenian conductor, Aljosa Skorja, who trained first in Ljubljana and subsequently at the Royal Northern College of Music. Now based in North Leeds he has brought a dash of continental flair to the orchestra!

New members are very welcome. We have a waiting list for woodwind players but there are a few spaces for strings and brass. Please contact Helen Thornton on 01943 463099 or e-mail otleychamberorchestra@gmail.com



'There is a chill in the summer air and a strange sense of calm. You look around, there is no one to be seen. Suddenly you hear a shout in the distance and two people running. 'Normal' you think... until they get closer. You see panic and horror in their eyes. Then you hear it....

A bloodcurdling scream you will never forget....

You start running....'

Otley's third Zombie Apocalypse is set to return on Saturday 8th August 2015! Teams of survivors will try to find salvation completing tasks and challenges across Otley whilst avoiding hordes of flesh hungry zombies! The ultimate challenge... Stay alive!!

Tickets are on sale now!

<https://otleyzombieapocalypse.wordpress.com/>

All proceeds will go to Martin House Children's Hospice.

Find us on facebook/ twitter/ Instagram @otleyzombies

Email otleyzombies@yahoo.com



Over the summer the Wharfedale Gardeners' Group will be holding their very popular visits to gardens, beginning with a day trip to Cath's Garden Plants and Greencroft in Cumbria. This will be followed by two evening trips: the first to Littlethorpe Manor at the end of June and the second to Stillingfleet Lodge in July.

The 2015/2016 season begins on Tuesday 8th September, with a lecture by Malcolm Hockham from Egglestone Hall Gardens, near Barnard Castle, entitled *"Tales from a Teesdale Nursery"*.

The October meeting on Tuesday 13th will be a talk by garden writer, Ursula Buchan on *"Dig for Victory"*.

Further details of next year's programme will be in the next edition of Otley Matters.

New members are welcomed: for further information contact the Membership Secretary, Thelma Harrison on 01132256405.

SAINSBURY'S OTLEY

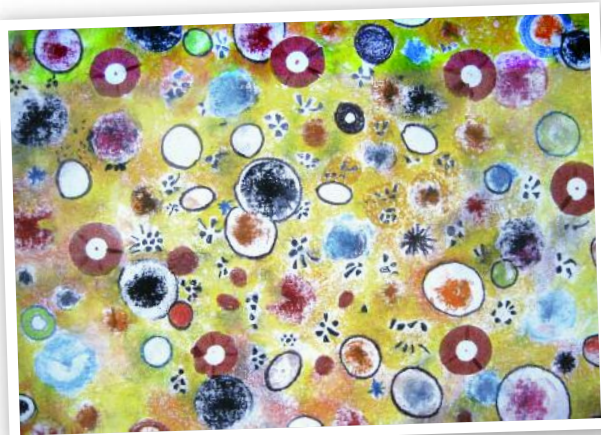
Paul Mitchell is the new store manager for Sainsbury's Otley. Paul has worked for Sainsbury's for 12 years and his last position was store manager for Monk Cross York. Paul is 34, married and went to University of Bradford School of Management.

Sainsbury's Otley are pleased to announce it raised £2,358 for Red Nose day. The money was raised through Tombola, bag packing, to name just a few of the activities.

Paul would like to thank customers for supporting the charity once again.



Otley Arts Club



New Members Welcome

Otley Arts Club is a friendly local arts club with a long history. Established in 1947 we still, each year, have a varied programme of guest speakers, tutorials and demonstrations, life drawing and portrait evenings – plus our workshop sessions where you can continue your own projects in a relaxed environment.

We hold an Annual Summer Exhibition, this year through most of July at the Otley Courthouse - and on the morning of Saturday May 30th, we have a fundraising sale at the Buttercross.

We meet on Wednesday evenings 7.30 – 9.00pm at the Welfare Centre, Crossgate, opposite The Old Cock public house. It's a friendly and informal group and we're looking for new members, so please call in whatever your age, abilities or creative interest.

Our membership fees are £15 per term or £40 for the year. Alternatively just drop in by the week for £3 per session - your introductory evening is free.

You can contact Phil on 01943 467029, Susan on 01943 851413 or Evelyn on 07772 613082 for more details.

WHARFEMEADOWS CROWN GREEN BOWLING CLUB WELCOMES NEW MEMBERS



Crown Green Bowling is a pleasurable pastime enjoyed by people of all ages. It is an ideal way of meeting new friends, enjoying your leisure time and transforming your social life. It offers hours of pleasure both to beginners and to the most experienced bowlers. It will fill as much or as little of your time as you choose. Those who take up crown green bowling never regret it.

Wharfemeadows is a thriving, happy club with about seventy active members. We delight in welcoming new members and do our very best to make them feel welcome. Whether you are young or old this is an opportunity for you. Why not give it a try – you'll soon be hooked on a pleasurable, healthy activity. If you're interested and would like more information just give us a ring and we'll take it from there.

Phone: Sylvia Richardson 01943 463 898 or Mike Taylor 01943 512 194.



Events listings at Otley Courthouse for June:



Sunday June 7th 8pm - We Banjo Three

With fiddle, banjo, mandolin, guitar & vocals, the band's blend of Irish and bluegrass make them highly popular. This gig will sell out so get your tickets quick!

Tickets are £12.50/11 in advance or £13.50/12 on the door.

Friday June 12th 7.30pm

Joe Maiden: Grow with Joe

Joe Maiden regularly imparts his gardening words of wisdom on his Radio Leeds programme, and this is your opportunity to come and hear him in person. Bring your gardening problems and queries and ask Joe to provide the answers.

Tickets are £8/7 in advance £9/8 on the door.

Saturday June 13th 8pm

Charlie Dore and Julian Littman with Otley Singers

The evening opens with a performance by the all-female community choir Otley Singers. Then multi award winning Charlie Dore takes the stage performing her new album Milk Roulette. Julian Littman accompanies her for a night of eclectic contemporary folk music.

Tickets £12/10 in advance, £13/11 on the door.

Friday June 19th 8pm - Gigspanner

Legendary fiddle player Peter Knight (ex Steeleye Span) is joined by Roger Fleck on guitar and Vincent Salzfaas on percussion.

Tickets are £12/10 in advance, £13/11 on the door.

Thursday June 25th 7.30pm

Globe on Screen: Comedy of Errors

Join us for our second screening in high definition of a production from the world famous Globe Theatre. Take one pair of estranged twins, keep them in ignorance of each other and throw them in a city with a reputation for sorcery and you have all the ingredients for theatrical chaos.

Tickets are £10

Saturday June 27th 3pm & 6pm

Manasamitra presents Lullaby

Lullaby is a creative sharing and learning session exploring lullabies from across the world. Come and relax and enter a world of soothing night time music designed to make you feel calm and at peace. This is a 45 minute music performance in a relaxed setting.

Tickets are £8/6. Under 6s are free.

Tickets for these and all other Otley Courthouse events can be booked by popping into the Courthouse, calling the box office on 01943 467466, or by visiting www.otleycourthouse.org.uk

Summer Movie Matinees at Otley Courthouse

Start time 2pm, with tea/coffee available from 1.30pm, included in ticket price of £4. Available from the box office (01943 467466) or online at www.otleycourthouse.org.uk

Thursday 11 June

The Imitation Game 2014, UK, 114 mins, 12A, biog/drama, thriller
During World War II, mathematician Alan Turing (Benedict Cumberbatch) tries to crack the enigma code with help from fellow mathematicians.

Thursday 9 July

Big Eyes 2014, UK, 106 mins, 12A, biography drama
A drama about the awakening of the painter Margaret Keane (Amy Adams), her phenomenal success in the 1950s, and the subsequent legal difficulties she had with her husband, who claimed credit for her works in the 1960s.

Thursday 13 Aug

Mr. Turner 2014, UK, 150 mins (with interval), 12A, biog/history drama
An exploration of the last quarter century of the great, if eccentric, British painter J.M.W. Turner's life. Starring Timothy Spall and directed by Mike Leigh.

COURTHOUSE INCLUSIVE

Fridays 11.00 – 12.30 in Otley Courthouse Cafe

A social coffee morning in Otley for those who are experiencing or have experienced emotional distress – including a sense of loss, loneliness or sadness. A friendly gentle space to meet and chat.

For more information ring the Inclusive Team on 07501 118656 or 01943 467029

Buses from: Horsforth, Rawdon, Yeadon, Guiseley 33, 33A, 781.
Adel, Bramhope X84.
Holt Park, Pool and Wharfedale Hospital Circular 940.
Ikley X84



Would you like to;

- Support a great cause?
- Meet like-minded people?
- Experience a sense of pride in your accomplishments?
- Share your talent and energy with a group of caring individuals?

We need volunteers for;

- Befriending • Car Drivers • Lunch Clubs
- Drivers for Mini Bus
- Games & Music Activities and much more!!

We Look Forward To Welcoming You Into Our Team

For Volunteer Application Pack or Additional Information, Call Otley Action Older People at 01943 463965 or

Email: info@otleyactionforolderpeople.gov.uk



Are you interested in volunteering?





Otley Pub Club wins first ever multiple bid to protect town's pubs

Otley, already famous for its many pubs, has achieved a notable first. Otley is the first town in the country to have succeeded in a multiple application to have all 19 pubs in the town listed as Assets of Community Value. By obtaining this status it means that the pubs and the community have a greater degree of protection against change of use. In practice it means that no pub can be put up for sale for alternative use without an opportunity for the community to do something about it and without it going through the planning process.

The application was made to Leeds City Council by Otley Pub Club, a voluntary community organisation which exists to support and promote the town's pubs. Its chairman, Andy Fitzgerald said: "This is great news for the pubs and the town and I am delighted that Otley has become the first place in the country to have all its pubs listed as Assets of Community Value and very proud that Otley Pub Club has

achieved this. Otley is well known as a famous pub town and this will boost that reputation further still and I hope will lead to even more people coming into Otley to enjoy the town's pubs and history."

Otley Pub Club is an organisation created by local pub supporters and local publicans. Free to join, it is a way for Otley people to support their local pubs and enjoy the wide selection of real ales and for publicans to communicate with each other and their customers. The club campaigns on behalf of pubs where needed and organises social events, runs a website and publishes a popular monthly newsletter and the successful Ale Trail leaflet. It has had success in the past in getting several of the town's pubs reopened after closure and in encouraging investment in existing pubs.

For more information visit www.otleypubclub.co.uk

Otley Pub Club to support Yorkshire Day

Otley Pub Club will be supporting Yorkshire Day by encouraging the pubs in Otley to stock even more locally produced Yorkshire ales to mark the day and to use the occasion to celebrate the wide and rich range of Yorkshire beers available.

Visitors to Otley pubs already probably have the widest range of locally brewed real ales on offer for any town of comparable size. Real ale fans are spoilt for choice with beers from the well-known Otley microbrewery Briscoe's and nearby breweries of Wharfebank, Wharfedale,

Ilkley, Kirkstall, Leeds, Saltaire, Roosters of Knaresborough, Daleside of Harrogate and Copper Dragon in Skipton all regular favourites, plus Otley's specialist beer shop the Curious Hop.

Yorkshire Day presents an opportunity to discover these and other Yorkshire ales.

Anyone wanting to find out what will be available on Yorkshire Day or any other time can find out details on the Club's website: www.otleypubclub.co.uk



The Woolpack Music Studios on Bondgate offer a variety of music and other activities for young people and all ages of the local community.

We continue to run Saturday morning music activities for ages 11 to 16, ranging from singing, ukulele group and rock bands.

In the summer holidays (27th to 31st July) we will be running our annual 'Gig In A Week' project for ages 11 to 16 - 5 days of music-making in bands with a live gig at the end.

For adults we have **Otley Ukulele Orchestra** (Monday evenings), **Otley A Cappella Choir**

(Thursday evenings) and our **Music Social Club** for a relaxed strum, sing, tea and biscuits (Wednesday mornings).

Recording studio - adults or young people

We have a fully equipped recording studio and are actively looking for bands, ensembles or solo artists to make use of this. Please enquire for rates and availability.

We continue to supplement these activities and welcome any enquiries about these or any other music or arts interests.

Please contact richard@bighooa.co.uk or call 07956 205151.



OTLEY CHORAL SOCIETY LOOKS TO THE FUTURE

After a very successful final year under their long standing conductor Alan Horsey, Otley Choral Society is now looking forward to an exciting future under their new conductor, Barry Jordan.

Over the summer some members of the choir are joining with their sister choir at Ilkley and the Leeds Symphony Orchestra to perform, on 4th July at St Margaret's Church in Ilkley, a programme of popular operatic pieces for choir and orchestra.

The choir then resumes in September with the first rehearsal of their new season as they begin work on their Autumn programme, featuring popular opera classics and Handel's Messiah.

New members are always welcome. Rehearsals run from September to April on Tuesday evenings at Newall Church Hall 7.30-9.30pm.

For further information see our website www.otleychoral.org.uk



SPONSORED BY OTLEY TOWN COUNCIL 2015/16



OTLEY LIONS

Otley Lions have been busy again this year.

They contributed £250 to Pat Brown's Arctic dog-sleigh trek to buy a Guide Dog called "Otley".

When the Warmsworth Lions sought support for their great work in Gambia, the Otley Lions held a sale under the Buttercross raising £150.

The Lions donated £100 towards funds for Rugby League Cares and Joining Jack. The Lions donated four cyclo-cross bicycles to the Otley Cycling Club - a great boon to OCC's fine cause.

A bag-pack was held at Sainsbury's, raising £660 for the Lions' latest major venture - the "Lions' Den" playground at the Children's Centre.

The Giant Easter Eggs have sold well and the Lions thank the cooperating businesses and their customers.

Otley Friends of Martin House Children's Hospice



Martin House Children's hospice provides care for children with life limiting and terminal illnesses and support for their families within the Yorkshire area. Over the years this has included a significant number from Otley and its surrounding villages.

The Otley Area Friends Group came into existence to provide a link between the generous people of Otley and the hospice. Over the past years Vic and Liz Heffer have been the Otley face of Martin House and through their leadership and unstinting endeavours the group recently passed the £100,000 fundraising milestone...an incredible achievement. Although Vic and Liz are still much part of the Martin House Group they are now handing over the leadership to another Otley resident, Anna McQuaid, whose family has personal experience of using Martin House. Anna and her husband Liam have supported the hospice for many years, in many capacities, and are now looking for new members to come on board to help them.

If you would like to help even if you only have a little time to spare we would love to hear from you.

For further information please call Anna on (01943)468625

Email: anna@xlninternet.co.uk

Facebook: *Martin House Otley Friends*



PHG's Community Education



The new season of community education evening classes at Prince Henry's is being put together now. With classes from Sewing for Fun and Guitar to Basic Astronomy, via 10 different languages, there is sure to be something for everyone. The languages cover the more usual French, Spanish, Italian and German with Portuguese, Russian and Turkish also on offer. The popular British Sign Language courses will also be running.

The new brochure will be published in July. To order your free copy, call Pippa McPherson on 01943 463524 or email her on pj.mcpherson@princehenrys.co.uk.

The brochure will also be available online at www.princehenrys.co.uk, from the end of July.



MESSAGE FOR OTLEY CHARITIES

Greetings and good news for you! Voluntary Action Leeds now has a Governance Worker who has produced special pages on our website www.doinggoodleeds.org.uk called the Governance Academy. This is a really exciting development. Charities can join for free and can take advantage of opportunities to attend charity law seminars delivered by charity law solicitors. Also, there are lots of new fact sheets on the academy pages containing masses of up to date information on governance and charity law issues. We have also got a new training course for chairs of registered charities called "How to be an effective chair".

Visit the training section of www.doinggoodleeds.org.uk

Wild Goose

Wild Goose provides outdoor workshops for stressed-out adults. We use the power of nature to help people relax, learn new skills and meet new people. We help people like **YOU** to reconnect with yourself, with nature and with your life. Our workshops, which are based in Otley, have 4 main themes: campfire cooking, natural art and craft, wellbeing and bushcraft.

Being outside has been scientifically proven to decrease stress levels, anxiety and depression. Fresh air makes us calmer, happier and more focused. It's good for mind, body and soul!

Wild Goose workshops are **FUN, SOCIABLE, CARING** and **CREATIVE**. We work with groups of up to 10 people and all our sessions are informal, flexible and enjoyable! Above all you **WILL** laugh – and that's a promise!

For more information visit www.wildgoosecic.co.uk and find us on facebook and twitter too!



OCT OTLEY BUSINESS AWARDS 2015

Continuing Otley Chamber's outreach to new areas of the local business community, the new Presidential year began with the inaugural Otley Business Awards, hosted by Korks on Bondgate.

With standing room only it was great to see over 90 people at the event representing 60 of our town's businesses, socialising, networking and sharing the air of excitement and anticipation.

Congratulations to all the nominees and this year's winners:

- Best Newcomer – A Casa Di Alessia
- Best Food & Drink – Jewel Of India
- Success for Innovation – Blue Octopus
- Best Service Sector – Rest Assured
- Best Retail – Chevin Cycles
- Best Small Business – The Traditional Sweet Shop
- Best Large Business – Bondgate Bakery
- Good Service Award – Althams Travel
- Good Café Award – Cheerful Chilli
- Lifetime Achievement Award – Trevor Backhouse, Patisserie Viennoise

The Good Café Award and Good Service Award were determined respectively by independent 'secret shoppers' who visited each café in the area and a range of businesses nominated by members



of the public during 2014 with the presentations held back until the awards night

Trevor Backhouse now takes a back seat with the Chamber after 30 years of involvement during which he held the Presidency on three occasions whilst also building his chocolate empire from his 'Theatre of Confections', Patisserie Viennoise on Westgate.

The awards ceremony was preceded by the Chamber's Annual General Meeting at which outgoing President Alan Sowden handed over the chains of office to incoming President Tom Hatley.

The Chamber's new logo was also revealed, chosen by the Chamber's membership from a shortlist of locally produced designs.

For further information please contact Tom Hatley 07793 765713.

NORWOOD RETREAT CENTRE

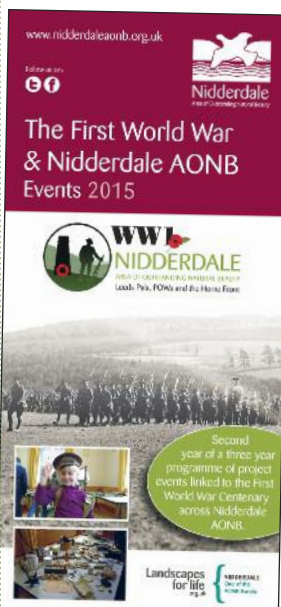
Looking for somewhere for a business meeting, away day, cycle club meet, walking activity meet or a base for a family day out or party in a tranquil rural setting, then look no further? Norwood Chapel and Retreat Centre is the ideal place for you. The building was erected in 1925 and in 1994 part of the building was converted into use as a day retreat centre.



Situated in a superb location on the B6451 overlooking Lindley Wood Reservoir, the centre has a lounge which can seat up to 30 people, kitchen with equipment for basic self-catering, toilets and good access for the disabled. If groups do not wish to self-cater, with prior arrangements through the Warden, refreshments can also be provided at reasonable cost.

For further details, contact Brenda Greetham on 01943 464458 or email brendagreetham@gmail.com for details of prices and availability.

THE FIRST WORLD WAR & NIDDERDALE AREA OF OUTSTANDING NATURAL BEAUTY



A series of events are underway as part of the 'First World War & Nidderdale AONB' project. The project, funded by the Heritage Lottery Fund, runs until 2016 and is looking at the impact of the First World War on the AONB landscape, with particular focus on the Leeds Pals who trained in the AONB.

Events will take place across the AONB and in Leeds, including:

- Talk: Tracing Wharfedale's First World War Archaeology - Wed 22 July, 7.30pm At: Clarke-Foley Centre, Ilkley.
- 'Bring and tell' event and project exhibition - Sat 8 & Sun 9 August, 11am to 4pm 'Bring and tell' if you have any stories, accounts, items or questions relating to the First World War, or simply a general interest. At: Washburn Heritage Centre, Fewston.
- WW1 Activity Session for Families - Sun 13 September, 10am to 1pm This fun family session includes a 'hands on' WW1 archaeology activity, living history 'tommie', crafts and much more. Suitable for children aged 7+. At: Otley Core Resource Centre.

The full programme can be found at www.nidderdaleaonb.org.uk/Pages/WW1-Events.aspx

Yorkshire Dales - 6 Dales - 30 Walks

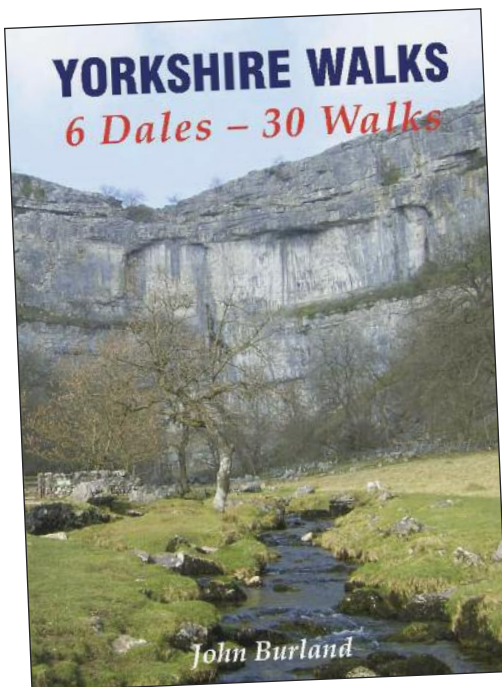
A new walking book by John Burland has recently been published by Sigma Books.

John has lived in Otley for over 30 years but has been treading the "broad acres" of the Yorkshire Dales for over 50 years and therefore has a vast knowledge of the areas covered in this new book.

The book features five walks from each of the six North Yorkshire Dales – Ribblesdale, Airedale, Wharfedale, Nidderdale, Wensleydale and Swaledale and includes walks to suit all ages and capabilities, ranging from short easy four mile walks to much more strenuous walks of up to twelve miles. Locally the book includes walks over Otley Chevin and Ilkley Moor.

A former Scout Leader and founder of The Wainwright Society, John's walking has taken him to many parts of the UK and abroad but he still reckons The Yorkshire Dales is one of the finest walking areas with its vast variety of scenery. For the past four years John has been researching and walking these routes. As well as the route descriptions themselves the book also contains a plethora of historical and local details of the area that the routes cover.

John has been a regular contributor to Dalesman & Cumbria magazines for the last 20 years. He has also presented his one-man show, *An Evening with Alfred Wainwright* over 30 times to audiences throughout the North of England.



The book is available in local bookshops and can also be ordered direct from the Sigma Books website.



DEMENTIA AWARENESS WEEK 2015

There are around 8,500 people living with dementia in Leeds. Close family and friends are often also affected by the impact of the condition on their loved ones. In Otley we have the status of being dementia friendly and the town is striving towards becoming a more welcoming place for people with dementia and everyone affected by it. You may have seen articles in the news around Dementia Awareness Week in May. The aim of this year's campaign is to increase public awareness of - and engagement with - the Alzheimer's Society as a source of support.

There is a lot going on for people with dementia in Otley, including singing groups, memory cafes and awareness talks however there is still more that can be done.

Some people have perceptual difficulties which can be helped or hindered by their environment so we are looking for businesses to sign up to becoming dementia friendly. The Alzheimer's Society states 'We do everything we can to keep people connected to their lives and the people who matter most. Because life doesn't end when dementia begins.'

If your organisation would like to host a Dementia Awareness Session or you need to know how to make your organisation more dementia friendly or if you or your family or friends are worried about your memory or need any support or information regarding dementia please contact the Alzheimer's Society on 0113 2311727 or email gwen.oates@alzheimers.org.uk.

MOSAIC COURSES



Why not learn a new skill and learn how to make beautiful original works of art for your home and garden?

I run courses in my riverside studio in Otley, for beginners and for experienced mosaic-ers. You can come as an individual or I take bookings for groups, at a time to suit you. Full or half day courses available.

Regular Friday morning courses during term time, 10.00 – 12.30. Come along for a coffee and a chat, and make something beautiful at the same time!

Mosaic-ing parties are an ideal birthday treat for creative kids! And adults! I also make community mosaics, in schools and for community groups, and undertake private commissions.

Please contact me or see website for up to date details of courses available.

Frances Taylor 07984 424897 frances@bighooa.co.uk
www.bighooa.co.uk

OTLEY COURTHOUSE MOSAIC

Otley Courthouse, in conjunction with the Big HooHa Company, are celebrating the installation of a large mosaic on North Parade – adding a splash of colour to a disused doorway on the side of the Courthouse.

The mosaic was funded by a Leeds Inspired grant and celebrates the day that the Tour de France came to Otley on 5th July last year. The main panel shows a cyclist heading off into the Yorkshire Dales and is surrounded by symbols representing the various activities which take place at the Courthouse - music, film, theatre, literature and visual arts - as well as the bar and café.

Design and production of the mosaic has been undertaken by Frances Taylor of the Big HooHa Company who runs community mosaic courses from her workshop in Otley. Many members of the community lent a hand with the piecing together of the final mosaic - which measures 5 feet by 3 feet - and a few of them were invited along to see the results of their labours and spot the pieces that they added to the mosaic.



Sports Chevin Family Activity Day!

FREE EVENT!

- Various sports to try including **cycling, athletics, hockey, football and boxing**...PLUS more to be announced!
- Cycle event - organised by **Otley Cycle Club**
- Fun Events** - assault course/tug of war and more.
- Food and Drink Stalls
- 5k Run - Organised by Otley AC

Raising Funds for Community Support and facilities in Chevin

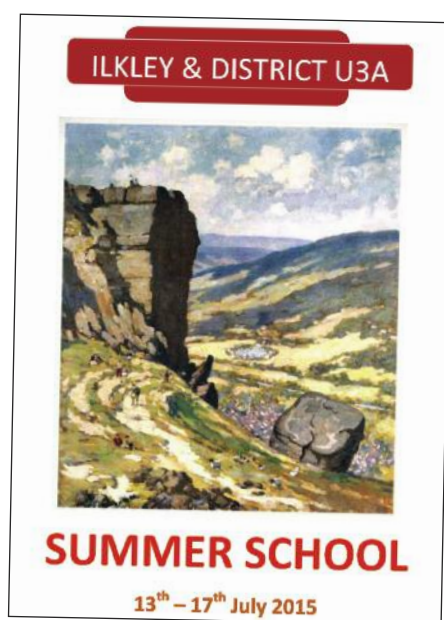
Promoting sport in the Otley/Chevin Area

Inclusive and safe sport for all ages and genders

Sun 7th Jun
12-4pm
Wharfedale Park.
All age groups welcome!

SPORT CHEVIN

For more information visit our Facebook page [facebook.com/sportchevin](https://www.facebook.com/sportchevin) go to our website www.sportchevin.uk or call **Tony Walker** on **07970706552**



U3A SUMMER SCHOOL BECKONS

The U3A annual Summer School from 13th – 17th July offers free events to members wishing to try something new - a 'taster' for an activity or interest that they may like to pursue.

There is something for everyone with over thirty sessions covering a wide range of activities. These include: sports like croquet, bowls and table tennis; creative sessions like art, singing and circle dancing; plus talks, walks and presentations.

The U3A is an educational co-operative charity for retired people who want to enhance their retirement by keeping mentally and physically active and meeting new people. The 'Ilkley and District' U3A is the local branch of this national organisation, covering Otley and surrounding areas.

We are a growing organisation with over 1,200 members, but always welcome new members and constantly look for additional activities over a range of subjects or interests.

For further information see <http://ilkleyu3a.org/> or telephone 01943 465059.

BRIDGE CHURCH

Our efforts recently have been concentrated on the Church charity for the year known as the Edge. This is a project which helps poor and vulnerable young people on the Bradford Holme Wood Estate. Our Food Bank collection has been diverted to that Charity for a couple of months and we are busy collecting decent clothing suitable for youngsters. When we hear stories of young boys with no clothes to their name other than what they go to school in we realise how relatively well-off we are.

June will be a busy month for fund raising. On June 13th a concert featuring the Washburn "Heritage Boys" will be held in the Church hall and the following Saturday, Otley Carnival Day, there will be "Teas on the Lawn", a regular event at the Bridge. Everyone is most welcome and there is a guarantee of a good seat to watch the Carnival parade along Bridge Street.

WEBSITE LAUNCHED

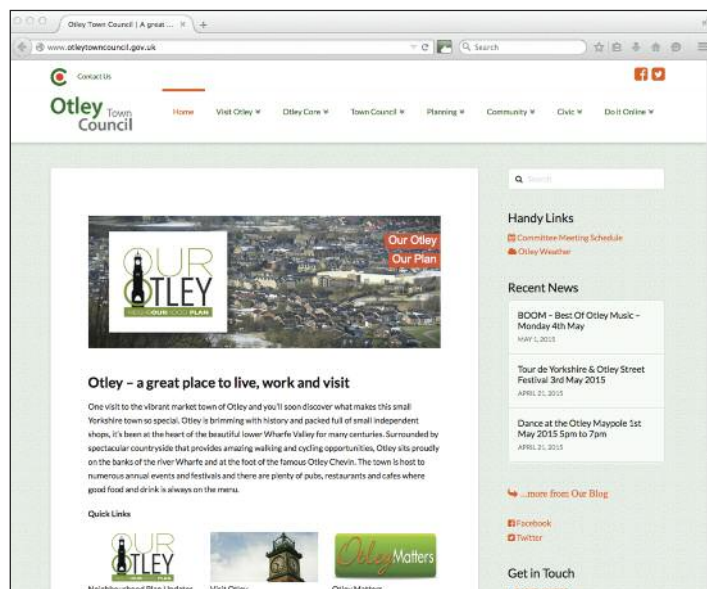
The new look Otley Town Council website has been launched. The aim is to make the website simpler to use, and more responsive, ensuring that residents and visitors will be able to find what they are looking for within a few clicks.

The website includes latest news, information about the Town Council and activities at Otley Core and links to Leeds City Council Services connecting you to the appropriate forms for reporting service problems such as refuse collection, street cleaning, road damage and faulty street lights etc.

A 'Visit Otley' link has also been included to provide information on tourist attractions in Otley and town events.

Visit the new look site at www.otleytowncouncil.gov.uk

You can also engage with the council using social media via facebook (Otley Town Council) and twitter @otleycouncil



TOWN MAYOR'S NEWS

The beginning of the year has been busy.

In January I hosted a Curry Evening at Red Pepper to raise funds for my Mayoral Charities. Big thanks to Miah and his team for such a successful and enjoyable evening.

I opened the Tour de France dry stone wall with Otley In Bloom on the bypass and later on that day unveiled the Otley Heritage Mosaic in Tittybottle Park with Frances Taylor and a number of school children who braved the freak snow storm. A big thank you to all who helped ensure both schemes be completed to commemorate a successful year.

During February I sat for my Mayoral portrait at Otley Arts Club. It must have been the longest I have remained still! I just hope they are kind when they unveil it.

Finally, more recently I helped unveil the plaque at Otley Sailing Club to open the new wet room to make it easier for disabled sailors to change. The weather couldn't have been better and it was brilliant to see so many people taking to the water.



OTLEY NEIGHBOURHOOD PLAN



What is a Neighbourhood Plan?

The Governments Localism Act 2011 gives communities like Otley the chance to have more of a say in the development of their local area. Once adopted the Neighbourhood Plan will become enshrined in Leeds' Development Plan for the next 20 years.

The Neighbourhood Plan will be produced by taking into account local opinions on a variety of planning matters (backed up by evidence) such as the mix of new housing, the development of vital infrastructure, the protection, improvement and provision of green spaces and community facilities and protection of the heritage environment - to name but a few!

Where are we in the process?

After the initial consultation four focus groups were formed and these have been working hard gathering evidence, carrying out further consultations with the aim of producing the next consultation document – The Policy Intentions Document. This will set out the proposed policy and land use intentions which the Town Council is minded to include in its final draft plan. The Policy Intentions Document enables the community to take the opportunity to comment and suggest improvements/ additions that can be incorporated into the final draft plan.

This document will be dropping through your door shortly so please fill in the questionnaire that accompanies it – it's your opportunity to have a say in the future of your town.

BELLMAN NEWS

The Bermuda International Town Crier Competition was held over the 22nd to 25th April 2015.

Twenty Four Town Criers from the UK and Canada (plus your Bellman and his escort Melissa), were fortunate enough to be invited to compete and enjoy the hospitality of the Government and people of Bermuda.

The competition consisted of 3 cries over 3 days. The first cry was hosted in St Georges (a World Heritage Site) as part of their yearly Peppercorn Ceremony and was attended by a huge crowd and a number of dignitaries, including the Governor General of Bermuda.

The second cry was at the Royal Naval Dockyards. A beautiful and historic location with the bonus of a microbrewery producing a number of beers including an IPA and Porter which had to be sampled for quality purposes.

The final cry was on the steps of the City Hall in Hamilton, Bermuda's capital with the results being announced at a dinner held at Riddells Bay Golf and Country Club the following evening.

The final placings (apart from the top 3) have not yet been advised, but the first place went to Mark Wylie of Calne in Wiltshire. The experience was a wonderful one and all the Criers were a credit to their towns.



OTLEY TOWN COUNCIL MESSAGE BOARD

ROOMS FOR HIRE

Otley Core Resource Centre has rooms, an exhibition space and community window available for hire. Should you wish to enquire about any of our facilities or make a booking, please contact a member of the Core liaison staff on **01943 466335** or e-mail: admin@otleytowncouncil.gov.uk
*Please note that charges may apply to your room booking.

OTLEY FOOD BANK

The Otley Core Resource Centre is a donation point for the Otley Food Bank. Please help local people in crisis by donating items of food which have a long shelf life. A shopping list is available at the collection point. We thank you for your support.

First Aid at Work

We are pleased to announce that all the staff at the Otley Core and attendants at the Orchard Gate Public Toilets have successfully completed their First Aid at Work training. The picture shows some of the successful recipients.



Sponsorships Awards 2015

Otley Town Council will be sponsoring the following events in the coming year:
Otley Carnival; Otley Walking Festival;
Otley Cycling Festival; Yorkshire Week;
Otley Mini-Mountain Series;
Otley Folk Festival; Otley Science Festival;
Otley Choral Society Concert Series; and,
Otley Cycle Race.

Community Service Support Awards 2015/16

Otley Town Council supports the following organisations providing services that address the Town Council's priorities:
Otley Citizens Advice Bureau; Otley Food Bank;
Otley Action for Older People; Otley & District Talking Newspapers; Otley Blind Club; Otley & District Road Safety Committee; and Behind Closed Doors.

GRANTS

Grants awarded this quarter:

- **Otley Courthouse** (awarded £500) – to support a variety of community arts sessions with young, old and learning disabled people;
- **Weston Lane Junior Football Club** (awarded £500) – support for transportable football posts;
- **Otley Conservation Task Force** (awarded £500) – support for a repair specification to be drawn up for the Navvies Memorial on Church Lane;
- **Grove Hill Lawn Tennis Club** (awarded £500) – contribution towards new clubhouse facilities;
- **Prince Henry's Battle of the Bands** (awarded £240) – to support the showcasing of young musical talent in the community;
- **Summer Bands in the Park** (awarded £300) – to support the brass bands in the park performances this summer.

If your group or organisation require grant support from the Town Council, please contact Jason Knowles for a copy of our funding criteria and an application form on **01943 466335** or email community@otleytowncouncil.gov.uk

Police Drop-in

Police contact point at the Otley Core Resource Centre every Wednesday (11am – 12am) and Friday (2pm - 3pm).

Buttercross Charity Stall Hire

The Buttercross in Market Place is available for hire, free of charge, to all charitable organisations on Fridays and Saturdays. Anyone interested please contact a member of the Core liaison staff on **01943 466335** or email admin@otleytowncouncil.gov.uk



TOWN COUNCIL ELECTIONS – THURSDAY 7th MAY 2015

Your elected Town Councillors are as follows:

ASHFIELD WARD

Peter Brown Liberal Democrats
Wendy Brown Liberal Democrats
Ian Jackson Liberal Democrats
Peter Jackson Liberal Democrats
Sylvia Thomson Liberal Democrats

PRINCE HENRY WARD

Philip Bye Liberal Democrats
Colin Campbell Liberal Democrats
Mary Vickers Liberal Democrats

DANEFIELD WARD

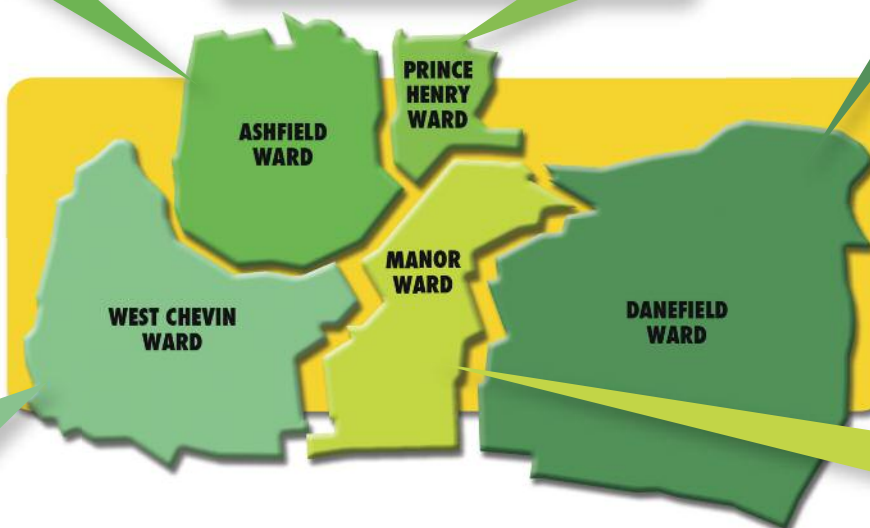
Mick Bradley Green Party
Nigel Francis Independent
Raymond Georgeson Liberal Democrats
Ray Smith Liberal Democrats

WEST CHEVIN WARD

Paul Carter Liberal Democrats
Savanna Dabill Liberal Democrats
Linda Hoare Liberal Democrats
Kate Whelan Liberal Democrats

MANOR WARD

Jackie Brown Liberal Democrats
Stephen Brown Liberal Democrats
Wayne Green Liberal Democrats
Douglas Robinson Liberal Democrats



If you need to contact a ward councillor, please see our website at www.otleytowncouncil.gov.uk or telephone 01943 466335.
Look out for all contact details of our new Council in the September edition.
All new councillors came into office on Monday 18th May 2015.



ALLOTMENT NEWS

We are pleased to confirm that David Wilson Homes who are currently building properties at Garnett Wharfe have offered to fund and undertake the development of a piece of waste land that is situated next to Whitebridge allotment site. This piece of land is owned by the Town Council and is designated for allotment use but is currently unworkable.

David Wilson Homes have set up a project team and are currently drawing up plans for the new plots. Watch this space for further news on this exciting project which will create a small number of much needed additional allotment plots.

As part of the Otley Walking Festival there will be a three mile walk around some of the Otley allotments on Monday 29th June. If you would like to join the walk please meet Jason Knowles at the Buttercross in Market Place at 6.30pm.

LEEDS CITY COUNCILLORS SURGERIES

FIRST SATURDAY IN THE MONTH
9.30 to 10.30AM - OTLEY LIBRARY

THIRD SATURDAY IN THE MONTH
9.30 to 10.30AM - YEADON TOWN HALL

If inconvenient please ring to organise a meeting on 07973521547 or email colin.campbell@leeds.gov.uk

MP's SURGERIES

The elected Member of Parliament for Leeds North West is Greg Mulholland (Liberal Democrat). Please contact us for details with regards to surgery dates and times.

OTLEY MATTERS ARTICLES

To have your organisation or group included in Otley Matters September Edition please contact Jason Knowles for editorial dates on 01943 466335 or email community@otleytowncouncil.gov.uk

TOWN COUNCIL MEETINGS JUNE TO AUGUST 2015

Policy & Resources 15th June 2015

Full Council

Events Management 22nd June 2015

Planning 29th June 2015

Human Resources

Community Development 6th July 2015

Planning 13th July 2015

Environment & Sustainability

Policy & Resources 20th July 2015

Full Council

All Town Council meetings are held at the Otley Core Resource Centre, 11 Orchard Gate, Otley. All meetings usually commence at 7pm but times are subject to change.

Please check www.otleytowncouncil.gov.uk or the windows at the Otley Core Resource Centre for meeting times.

Members of the public are encouraged to attend.

By prior arrangement with the Executive Officer members of the public may arrange to address a Committee or council meeting before it starts its agenda.

Please contact the Executive Officer on 01943 466335 or by email eo@otleytowncouncil.gov.uk for further details.

Please note that the Audit and Human Resources meetings are not open to the public.